



## Acme Sanitary Ware Co Ltd


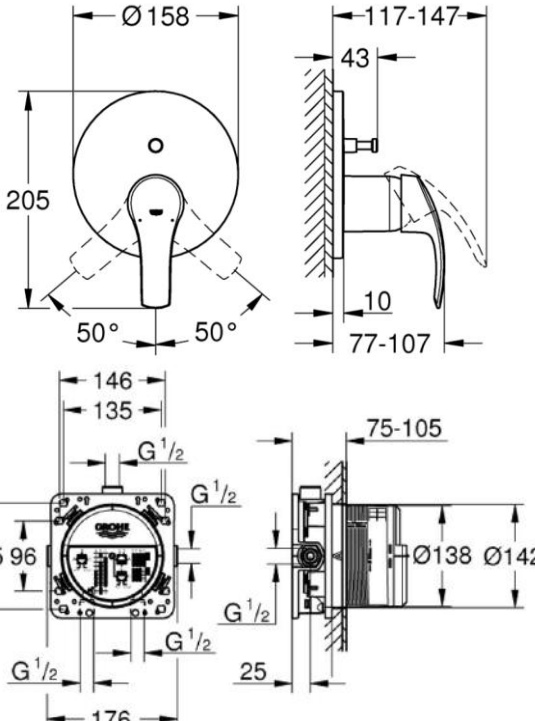

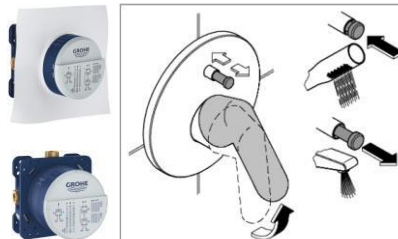
Acme Building, 22-28 Nanking Street, Kowloon, Hong Kong  
 Tel: 2388 7171 Fax: 2710 8012  
 E-mail: acme@acmesanitary.com.hk  
 Website: www.acmesanitaryware.com.hk



Pure Freude  
an Wasser

PROJECT		REF		REV	ITEM CODE	
LOCATION		DATE			PAGE	

## SANITARY WARE SPECIFICATION SHEET

Item Descriptions	GROHE (Germany) "Eurosmart" Single-lever bath & shower mixer trim with 2-way diverter		Illustration/ Drawing	
Dimensions	L158 x W147 x H205 mm			
Model	24043002 (Bath & shower mixer) 35600000 (Mounting box)			
Finish / Material	Chrome Plated			
Country of origin	Germany			
Manufacturer	GROHE Limited			
Supplier	Acme Sanitary Ware Co. Ltd Mr. Eric Wong/ Mr. Don Yuen (852) 2388-7171 / (852) 2710-8012			
Contact Tel/Fax	acme@acmesanitary.com.hk			
E-mail	www.acmesanitary.com.hk			
Website				
<b>"Eurosmart"</b> <b>Single-lever mixer with 2-way diverter</b> <ul style="list-style-type: none"><li>• set for final installation for</li><li>• GROHE Rapido SmartBox 35 600</li><li>• <b>GROHE SilkMove</b> 46 mm ceramic cartridge</li><li>• <b>GROHE StarLight</b> chrome finish</li><li>• wall escutcheon with <b>GROHE FastFixation</b> (covered escutcheon- and shaft sealing, covered fixing)</li><li>• metal escutcheon, retroactively 6° adjustable</li><li>• metal lever</li><li>• automatic 2-way diverter</li><li>• flow performance: outlet B = 27 l/min, outlet C = 27 l/min</li><li>• <b>without roughing-in-set</b></li></ul> 			<b>GROHE Rapido SmartBox</b> <ul style="list-style-type: none"><li>• Universal rough-in box, 1/2"</li><li>• 3 outlets 1/2"</li><li>• 2 inlets below, 1/2"</li><li>• installation depth 75-105 mm</li><li>• connection unit in DR brass</li><li>• pre-mounted flushing plug</li><li>• stable build-in box and protective cover</li><li>• fixing options for solid walls and dry cladding</li><li>• gasket</li><li>• without set for final installation</li></ul> 	
<b>Colour options:</b> <ul style="list-style-type: none"><li>000   StarLight Chrome</li><li>DC0   SuperSteel</li><li>DA0   Warm Sunset</li><li>A00   Hard Graphite</li><li>AL0   Brushed Hard Graphite</li><li>IG0   Chrome/Gold</li><li>GL0   Cool Sunrise</li><li>GN0   Brushed Cool Sunrise</li><li>DL0   Brushed Warm Sunset</li><li>BE0   Polished Nickel</li><li>EN0   Brushed Nickel</li></ul>				

Note:  [YouTube \(Rapido SmartBox | Installation Video\) https://www.youtube.com/watch?v=KsWdVrq9fVI](https://www.youtube.com/watch?v=KsWdVrq9fVI)

\* All information of the above is for the reference only. No prior notice is made if any changes.



## Acme Sanitary Ware Co Ltd

Acme Building, 22-28 Nanking Street, Kowloon, Hong Kong  
Tel: 2388 7171 Fax: 2710 8012  
E-mail: acme@acmesanitary.com.hk  
Website: www.acmesanitaryware.com.hk



Pure Freude  
an Wasser

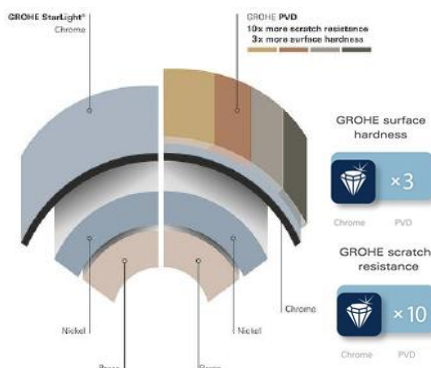
PROJECT		REF		REV	ITEM CODE	
LOCATION		DATE			PAGE	

## SANITARY WARE SPECIFICATION SHEET

### GROHE EUROSMART

#### GROHE'S NUMBER 1 IN PREMIUM PERFORMANCE

For almost 2 decades, its legendary quality has made the GROHE's Eurosmart range the obvious choice for planners, architects and plumbers. Making it the number 1 worldwide with over 30 million sold. With its wide range of designs and functionalities, its long-lasting GROHE SilkMove Technology and German engineering know-how, Eurosmart is valued for every kind of project – bath, kitchen, commercial, large-scale or small. Eurosmart: always a first class choice since 1999.



#### MORE THAN 200 POSSIBLE COMBINATIONS WITH GROHE RAPIDO SMARTBOX

As concealed mixing valves for showers and bathtubs are becoming increasingly successful, concealed units are in great demand. With its minimum installation depth of only 75mm, GROHE's Rapido Smartbox can be easily installed for all showers/bathtubs. The Rapido Smartbox concealed body allows you to control up to three water outlets and is compatible with all GROHE concealed models.

#### THE NEW GROHE RAPIDO SMARTBOX A UNIVERSAL SYSTEM FOR INFINITE POSSIBILITIES

#### GROHE SilkMove cartridge technology for smooth handling

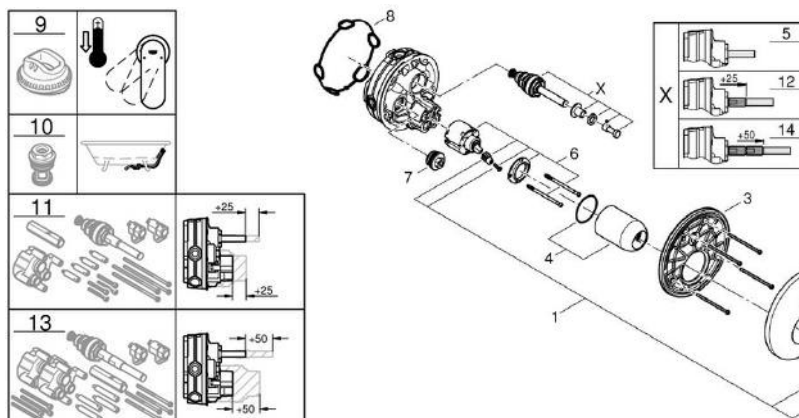
This premium tap comes with a continuously variable water temperature and volume adjustment technology, ensuring effortless lever operation even after years of use.

#### Easy to clean thanks to the GROHE StarLight chrome coating

Just wipe the tap down with a dry cloth – the ultra smooth surface finish is scratch resistant and ensures a lasting luminous sheen. You'll save plenty of time cleaning while your tap always looks shiny and new.

#### GROHE QuickFix Plus quick and easy installation in a few simple steps

Save time on the installation of your tap with GROHE QuickFix Plus. Consisting of fewer parts, our new system makes the installation process quicker and easier than ever.



Pos.-nr.	Prod. description	Order-nr.
1	Lever	46903000
2	Escutcheon	48429000
3	Mounting plate	48440000
4	Cap	02693000
5	Diverter	48442000
6	Cartridge	46048000
7	Non-return valve	49085000
8	Seal	48360000
9	Temperature limiter	46308000*
10	Backflow protection combination (EN1717)	14055000*
11	Universal extension set single-lever mixers, 25 mm	14056000*
12	Diverter	48444000*
13	Universal extension set single-lever mixers, 50 mm	14057000*
14	Diverter	48445000*

\* Optional accessories

Note:

\* All information of the above is for the reference only. No prior notice is made if any changes.